

Border Lite

PROJECT:

TYPE:

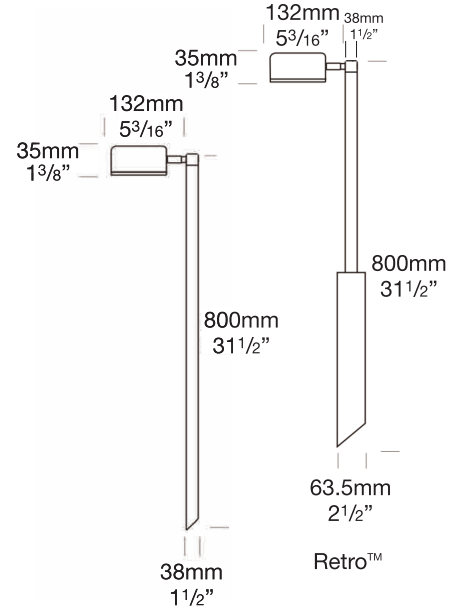
SOURCE:

NOTES:

PURELED SPECIFICATIONS

LED Chip	Cree XPG-3 Plug and Play field replaceable LED board
Luminaire Output Per Head	120 Lumens @ 700mA (2 watts), delivered from luminaire with unobstructed beam.
Lumens Per Watt	60 Lumens minimum @ 2 watts, delivered from luminaire with unobstructed beam
CRI (3000K)	90+
Colour Temperatures	2700K, 3000K, 4000K
Beam Angles	100 degrees
Ingress Protection	IP56/IP66

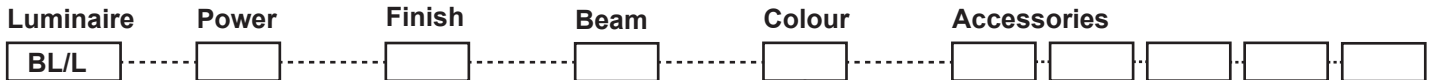
Warranty	Electronics = 5 years Body Cop/SS = 10 years Body Aluminium = 5 years
Standards	AS/NZS 61046 cUL 1838, 2108 CSA C22.2 No.250.7, No.250.0-08 CE



PRODUCT CONFIGURATION

Please fill in appropriate codes into boxes provided

Cat. No. BL/L



- S SERIES, REMOTE DRIVER
- D3 12VAC, 1W INTEGRAL
- D7 12VAC, 3W INTEGRAL
- D24 24VDC DRIVER
- R RETRO, 110/240V DRIVER

SERIES, REMOTE DRIVER REQUIRED:
Constant current driver Individual fixtures require 3vdc @ 700mA maximum

12VAC INTEGRAL DRIVER:
Hunza Buckbullet driver (included)
Input: 12VAC, 3watt total
Output: 3vdc @ D3=350mA, D7=700mA

110/240VAC RETRO DRIVER:
Input: 120/240vac, 3 watt total (included)
Output: 3vdc, 700mA (non dimming)

24VDC DRIVER:
Input: 24vdc.
Output: 18vdc @ 700mA constant current (non dimming)
Note: not for USA.

- Material/Finish**
- ALUMINIUM
- EBK BLACK
 - EBZ BRONZE
 - EOGR OLIVE GREEN
 - EWH WHITE
 - EWB WHITE BIRCH
 - EDG DARK GREY
 - ESTAR SILVER STAR
 - ECT CORTEN
 - SS STAINLESS STEEL
 - SBZ SOLID BRONZE

- Beam**
- Colour**
- 2 2700K
 - 3 3000K
 - 4 4000K

- Accessories**
- FM FLANGE MOUNT
 - FM90 FLANGE MOUNT 90
 - LKN LOCKING KNUCKLE
 - LENSBLC CLEAR LENS
 - CJK CABLE JOINT KIT

OTHER LAMP OPTIONS:
BL/H - G4 Halogen 12V Lamp
BL/GL - G4 LED Retrofit 12V Lamp (lamps vary by market - please refer to supplier for details)

[Click here for halogen specification sheet](#)

[Click here for 240v Remote Power Supply Guidance Charts](#)
[Click here for USA Remote Power Supply Guidance Charts](#)

LUMINAIRE CONSTRUCTION

CNC machined from one of the following metals:

Aluminium

Head: virgin high corrosion resistant CC401 low copper aluminium alloy, with chromate substrate and high UV resistant polyester powder coat.
Pole: aluminium 38mm (1½") tube.
Colours:
Black, Bronze, Silver Star, White, White Birch, Olive Green, Dark Grey, Corten.

Copper/Solid Bronze

Head: cast from LG2 bronze.
Pole: solid copper 38mm (1½") tube.

316 Stainless Steel

Head: cast from 316 stainless steel.
Pole: 316 stainless steel 38mm (1½") tube.

Knuckles:

Aluminium and Copper luminaires - 360° rotation and 0-90° elevation, solid brass with anti rust spring.
Stainless Steel luminaires - 360° rotation and 0-90° elevation, full stainless steel construction.

Lens:

3mm frosted shatter resistant glass.
Lifetime Warranty.

Gaskets:

Silicone, iron impregnated 220°C (428°F).

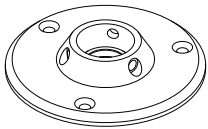
Mounting

The pole 800mm (31½") is directly mounted into the earth or concrete.
Flange Mount option is available for hard surfaces.

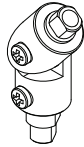
Luminaire Weight:

Low voltage
Alum: 0.800kg (1lb 12oz)
Cop/SBZ: 1.700kg (3lb 12oz)
SS: 1.600kg (3lb 8oz)
Retro™
Alum: 2.000kg (4lb 7oz)
Cop/SBZ: 3.400kg (7lb 8oz)
SS: 3.150kg (6lb 15oz)

ACCESSORIES



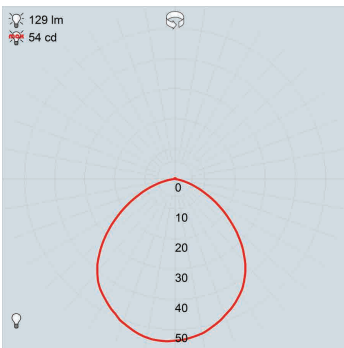
Flange Mount
FM38 for low voltage
FM90 for Retro



Locking Knuckle

BEAM ANGLES

IES files available for download: hunzalighting.com/downloads

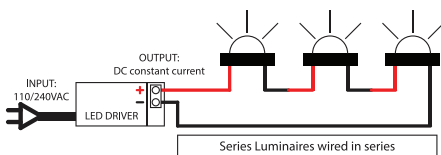


FWHM
frosted lens

WIRING GUIDE

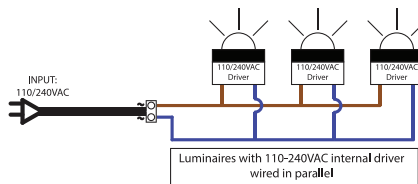
Available for download: hunzalighting.com/downloads

Series/remote driver

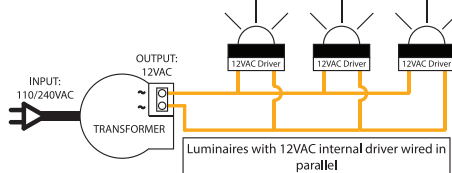


Diagrams are a guide only, wire colours and polarity may change depending on fixture and country

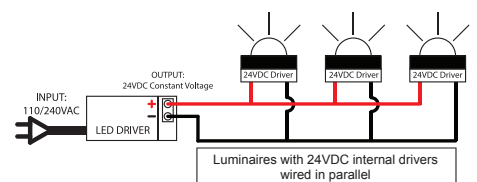
110/240v integral driver



12v integral driver



24vdc integral driver



Specifications may change without notification

Aug 2017